

# 4Z27



MADE IN ITALY

PLACING BOOM:  
**OPENING SYSTEM "Z"**

PUMPING UNIT:  
**UP TO 150 m<sup>3</sup>/h**

TOTAL WEIGHT:  
**< 19 t (41887 lb) on vehicle 2 axles**  
**< 20 t (44092 lb) on vehicle 3 axles**

ASSEMBLY ON VEHICLE 2 AXLES:  
**WB 4,400 – 4,800 mm**  
**(14'5" - 15'8")**

ASSEMBLY ON VEHICLE 3 AXLES:  
**WB 3,760 – 3,900 mm**  
**(12'1" - 12'7")**

## TECHNICAL CHARACTERISTICS



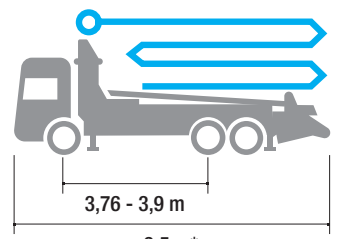
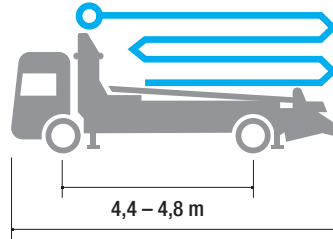
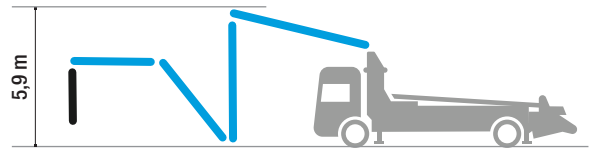
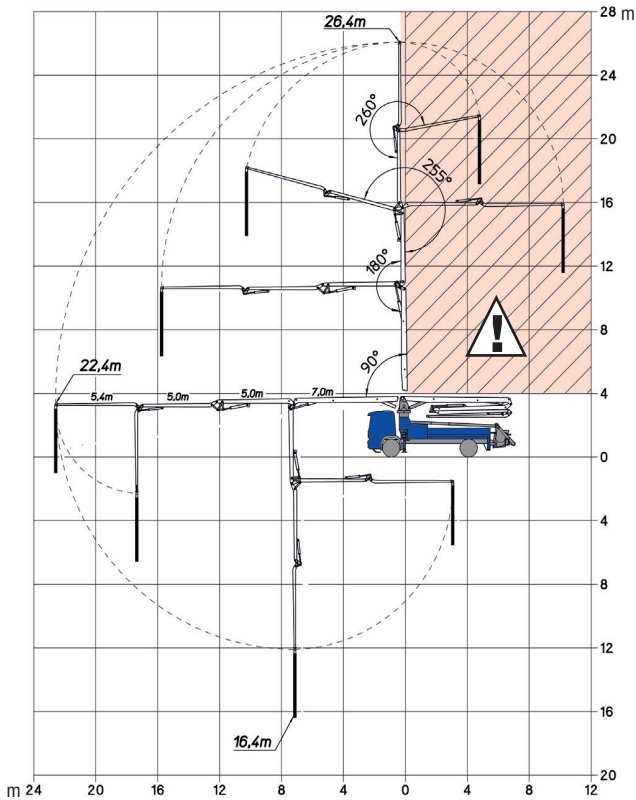
- Concrete pump designed and made by SERMAC
- Structural checks with Finite Element Method (FEM)
- Pump frame designed for high torsion rigidity
- Suitable for assembly on 2 or 3 axle trucks
- Boom 4-stage, Z-folding type
- Pipeline Ø 125 mm (5")
- Main components sourced from genuine European manufacturers
- Pumping unit with open hydraulic system
- Concrete S-valve Ø 9"
- Ideal for working in tight spaces



# 4Z27



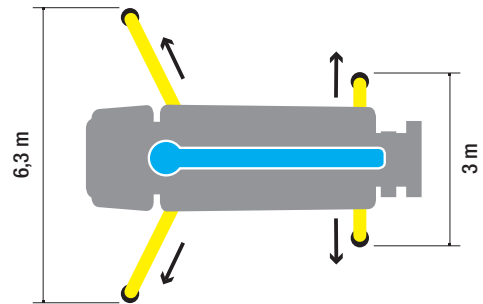
NO WORKING AREA



9,5 m\*

9,5 m\*

\*Dimensions varying according to truck assembly



## PUMPING UNIT G9

	AG9M10-150-80
THEORETICAL OUTPUT (MAX)* PISTON SIDE	150 m <sup>3</sup> /h - 196 yd <sup>3</sup> /h
PRESSURE ON CONCRETE (MAX)* PISTON SIDE	80 bar - 1160 psi
NUMBERS OF CYCLES PER MINUTES	32 ' /min
PISTONS DIAMETER	250 mm
CONCRETE CYLINDERS	1600 mm
S-VALVE DIMENSION	9"
CONCRETE HOPPER CAPACITY	650 l

\*Cannot be reached simultaneously



## DISTRIBUTION BOOMS

MAX. VERTICAL REACH	26,4 m (86'7")
MAX. HORIZONTAL REACH	22,4 m (73'5")
MAX. DOWNWARD REACH	-16,4 m (-53'9")
NUMBER OF BOOM SECTIONS	4
MIN. UNFOLDING HEIGHT	5,9 m
BOOM ROTATION	370°
BOOM SECTION ARTICULATION	90°- 180°- 225°- 260°
BOOM UNFOLDING SYSTEM	Z
FRONT OUTRIGGERS	X-type
REAR OUTRIGGERS	Fixed oblique
FRONT OUTRIGGER SPAN	6,3 m (20'8")
REAR OUTRIGGER SPAN	3 m (9'10")
RUBBER END HOSE LENGHT	4 m

## STANDARD EQUIPMENT

- Driven by PTO or gear box
- Concrete pipeline made in twin-wall with chromium carbide inserts
- Boom control by proportional distributor "Load Sensing"
- Two sets of radio remote controls provided with 2-speed proportional boom control
- High strength wear parts (S valve, wear plate, compensation ring)
- Automatic hopper greasing unit and manual back-up system
- Safety device on hopper door and hopper grate
- Remote controlled electric vibrator on hopper grate
- Aluminium hopper cover
- Water pump (60 l/min, 30 bar)
- Water tank capacity 600 l
- Lights for hopper lighting, LED
- Metal bin for accessories beside hopper
- Warning horn
- Accessories for cleaning and maintenance
- Declaration of conformity (user and maintenance manual)

## ELECTRONIC STABILITY CONTROL SYSTEM

- Sermac Control Stability (SCS - Basic)



## ACCESSORIES ON REQUEST

- Air charged sprayer for concrete release agent (25 l, 8 bar)
- Air compressor for pipeline cleaning (450 l/min, 8 bar)
- Automatic release of end hose
- Closing boom safety sensor
- Pipes and rubber end hose holder
- Pressure washer with fan-shaped nozzle (17 l/min, 130 bar)
- Proportional radio control with display
- Stop-flow concrete valve
- Working lights, LED

## ELECTRONIC STABILITY CONTROL SYSTEM

- Sermac Control Stability (SCS - Advanced)



More information:  
[sermacpumps.com](http://sermacpumps.com)

Reserved rights SERMAC S.r.l.: this brochure shows models, equipment (standard and optional), data and technical characteristics subject to modification for machines produced and sold by Sermac S.r.l. The catalog is intended for information purposes and the data shown does not constitute any sales contract. (4/27-04/23).



## SERMAC Srl

Headquarters: Via A. Manzoni, 146 - 20811 Cesano Maderno, (MB) Italy  
Tel. +39 0362 364 320 - Fax +39 0362 163 2000  
[info@sermacpumps.com](mailto:info@sermacpumps.com)

