

TWINSTAR 4Z28



MADE IN ITALY

PLACING BOOM:
OPENING SYSTEM "Z"

PUMPING UNIT:
UP TO 80 m³/h

TOTAL WEIGHT:
< 22 t (48501 lb) on vehicle 4 axles

ASSEMBLY ON VEHICLE 4 AXLES:
**WB 4,250 – 4,550 mm
(13'11" - 14'11")**

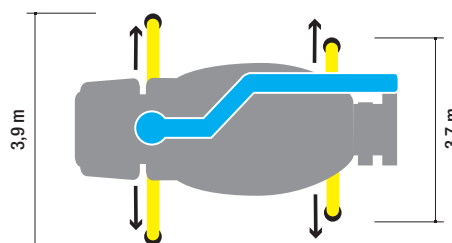
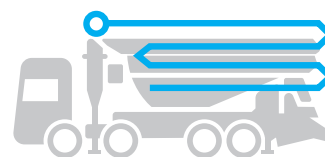
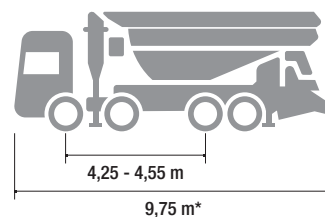
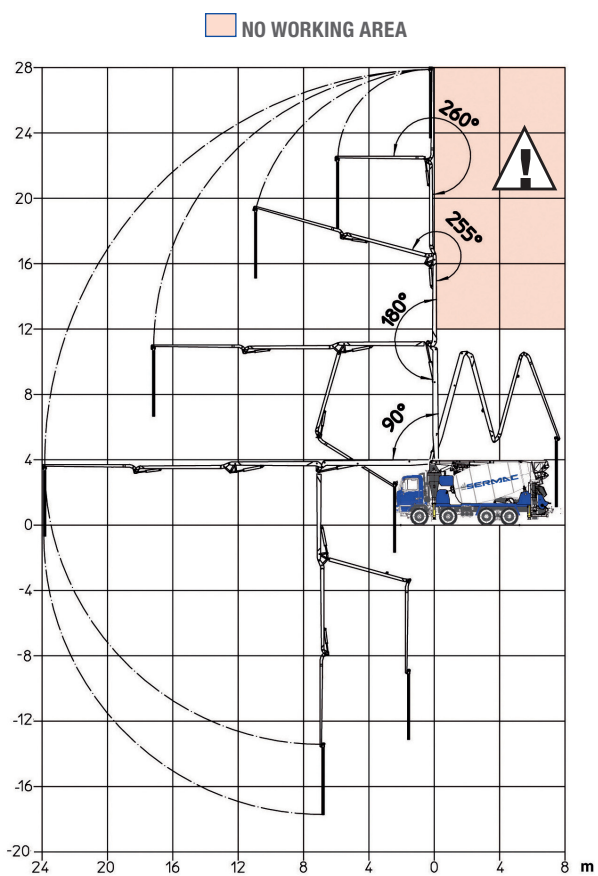
TECHNICAL CHARACTERISTICS



- Mixer pump designed and made by SERMAC
- Structural analyses with Finite Element Method (FEM)
- Pump frame designed for high torsion rigidity
- Suitable for assembly on 4-axle trucks
- Boom 4-stage, Z-folding type
- Pipeline Ø 100 mm (4")
- Main components sourced from genuine European manufacturers
- Pumping unit with open hydraulic system
- Concrete S-valve Ø 6" (S6) - Ø 7" (G7)
- Drum with high load capacity
- Ideal for working in tight spaces



TWINSTAR 4Z28



*Dimensions variable according to the truck assembly

| | PUMPING UNIT | |
|---|--|---|
| | S6 | G7 |
| | BS6C07-73-70 | BG7C08-80-80 |
| THEORETICAL OUTPUT (MAX)* PISTON SIDE | 73 m ³ /h - 95 yd ³ /h | - |
| THEORETICAL OUTPUT (MAX)* PISTON SIDE | - | 80 m ³ /h - 122 yd ³ /h |
| PRESSURE ON CONCRETE (MAX)* ROD SIDE | 70 bar - 1015 psi | - |
| PRESSURE ON CONCRETE (MAX)* PISTON SIDE | - | 80 bar -1160 psi |
| NUMBERS OF CYCLES PER MINUTES | 48'/min | 42'/min |
| PISTONS DIAMETER | 180 mm | 200 mm |
| CONCRETE CYLINDERS | 1000 mm | 1000 mm |
| S-VALVE DIMENSION | 6" | 7" |
| CONCRETE HOPPER CAPACITY | 450 l | 500 l |

*Cannot be reached simultaneously

| | MIXER |
|-------------------------|--------------------|
| | DATA |
| NOMINAL CAPACITY | 8,5 m ³ |
| GEOMETRICAL DRUM VOLUME | 14 m ³ |
| NUMBER OF RPM | 0 - 16 |
| WATER TANK CAPACITY | 800 l |
| LITER-COUNTER | 0-500 l |



DISTRIBUTION BOOMS

| | |
|---------------------------|--------------------------|
| MAX. VERTICAL REACH | 28,1 m (92'2") |
| MAX. HORIZONTAL REACH | 24,1 m (79') |
| MAX. DOWNWARD REACH | - 18 m (59') |
| NUMBER OF BOOM SECTIONS | 4 |
| MIN. UNFOLDING HEIGHT | 6,35 m (20'9") |
| BOOM ROTATION | 370° |
| BOOM SECTION ARTICULATION | 90° - 180° - 255° - 260° |
| BOOM UNFOLDING SYSTEM | Z |
| FRONT OUTRIGGERS | Horizontal |
| REAR OUTRIGGERS | Horizontal |
| FRONT OUTRIGGER SPAN | 3,9 m (12'9") |
| REAR OUTRIGGER SPAN | 3,7 m (7'2") |
| RUBBER END HOSE LENGHT | 3,5 m |

STANDARD EQUIPMENT

- Concrete pipeline made in single-wall steel
- Boom control by proportional distributor "Load Sensing"
- Two sets of radio remote controls provided with 2-speed proportional boom control
- High strength wear parts (S-valve, wear plate, compensation ring)
- Automatic hopper greasing unit and manual back-up system
- Safety device on hopper door and hopper grate
- Remote controlled electric vibrator on hopper grate
- Water pump (230 l/min - 13 bar)
- Light for hopper lighting, LED
- Metal bin for accessories beside hopper
- Warning horn
- Accessories for cleaning and maintenance
- Declaration of conformity (user and maintenance manual)

ELECTRONIC STABILITY CONTROL SYSTEM

- Sermac Control Stability (SCS - Basic)



ACCESSORIES ON REQUEST

- Concrete pipeline made in twin-wall with chromium carbide inserts
- Stop-flow concrete valve
- Pressure washer with fan-shaped nozzle (17 l/min, 130 bar)
- Overturning chute
- Kit pipeline pumping on ground
- Ecologic plug
- Closing boom safety sensor
- Air compressor for pipeline cleaning (450 l/min)
- Air charged sprayer for concrete release agent (25 l, 8 bar)
- Additional work light on hopper
- Additional outlet chute

ELECTRONIC STABILITY CONTROL SYSTEM

- Sermac Control Stability (SCS - Advanced)



More information:
sermacpumps.com

Reserved rights SERMAC S.r.l. - this brochure shows models, equipment (standard and optional), data and technical characteristics subject to modification for machines produced and sold by Sermac S.r.l. The catalog is intended for information purposes and the data shown does not constitute any sales contract. (4/28 04/23).



SERMAC Srl

Headquarters: Via A. Manzoni, 146 - 20811 Cesano Maderno, (MB) Italy
Tel. +39 0362 364 320 - Fax +39 0362 163 2000
info@sermacpumps.com

